

Gig Harbor

Winter 2012



Gig Harbor's official guide to

Tacoma Community College • Credit Classes • Continuing Education Classes

PenMet Parks Recreation Guide • Events • Recreation • Children's Activities • and more!

Register for class

Online:

www.tacomacc.edu/ce

By phone:

253.460.2424

• VISA • MasterCard

In person or by mail:

TCC Continuing Education

3993 Hunt Street, Gig Harbor, WA 98335

• Check or money order • VISA • MasterCard

Continuing Education Age Disclaimer: All Continuing Education classes are designed for adults 18 years of age and older, unless otherwise specified in the class description. Those classes specifically designed for students under the age of 18 are listed in our youth section.


Refund Non-credit Courses: Tacoma Community College reserves the right to change or reschedule classes as needed. All classes are payable in full. **Refunds will be issued as follows:** Non-credit classes are subject to 100 percent refund if cancelled by the college. TCC reserves the right to change or reschedule classes as needed. All classes are payable in advance. **Refunds of course fees will be given as follows:** 100 percent less \$20 when a student submits a written withdrawal request at least seven calendar days prior to the first day of class. Zero percent will be refunded when a student has not withdrawn before a class begins, does not attend, or stops attending the course. Please allow 3-4 weeks for processing.



Directions: From westbound Hwy. 16, take the Gig Harbor City Center exit; turn left on Pioneer Dr. NW (turns into Wollochet Dr.); turn left on Hunt St. NW; campus is two blocks down on the left.

Key to Gig Harbor Class Locations:

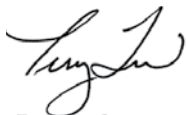
- CLPS** Coni Liljengren Piano Studio
6908 81st Ave. NW, Gig Harbor
- GHC** Gig Harbor Campus
3993 Hunt St., Gig Harbor
- HDPC** Harbor Dance and Performance Center
6820 Kimball Dr., Gig Harbor

 <p>TACOMA COMMUNITY COLLEGE</p>	<p>Gig Harbor Campus</p>	<p>3993 Hunt Street • Gig Harbor, WA 98335 253.460.2424 • www.tacomacc.edu/ce</p>			
TCC CONTINUING EDUCATION REGISTRATION FORM		Shaded areas for office use only			
Last name	First name	Initial	Student ID No. (assigned by staff)	Quarter	
Address		Apt. #	Date of birth	Sex <input type="checkbox"/> Female <input type="checkbox"/> Male	
City, state and zip code	Email address	Day telephone		Evening telephone	
Would you like to learn about upcoming classes via email? <input type="checkbox"/> Yes <input type="checkbox"/> No		How did you learn about TCC classes? <input type="checkbox"/> Class schedule <input type="checkbox"/> Newspaper <input type="checkbox"/> Web <input type="checkbox"/> Brochure or flyer <input type="checkbox"/> Other			
COURSE INFORMATION					
Title	Department	Course No.	Section	Instructor	Fee
PAYMENT (enclose check, money order or bank card information)					
Total \$	<input type="checkbox"/> Check	Signature		<input type="checkbox"/> Bill company	Business Name
	<input type="checkbox"/> VISA/MC	Card No.		Address	
	<input type="checkbox"/> Money order	Cardholder Name	Exp. date	City	State
REFUND POLICY: Non-credit classes are subject to 100 percent refund if cancelled by the college. TCC reserves the right to change or reschedule classes as needed. All classes are payable in advance. Refunds of course fees will be given as follows: 100 percent less \$20 when a student submits a written withdrawal request at least seven calendar days prior to the first day of class. Zero percent will be refunded when a student has not withdrawn before a class begins, does not attend, or stops attending the course. Please allow 3-4 weeks for processing.				Tacoma Community College does not discriminate on the basis of race, color, national origin, sex, disability, sexual orientation, or age in its programs and activities.	

Look what's **NEW!** at the Gig Harbor Campus!

- p5 Beginning Memoir Writing
- p4 Introduction to Drawing – Intermediate
- p4 Jewelry Design – Beginning Earring Class
- p4 Jewelry Design – Crimping
- p4 Jewelry Design – Memory Wire Bracelet
- p5 Introduction to Songwriting and Composition
- p5 ICD-9 to ICD-10, Making the Change – Coder's Prep Test Study Group
- p5 Resume Writing with Word
- p4 Introduction to Touch Drawing
- p4 Expressive Acrylics
- p4 Digital Photography Saturday Workshop – Let's put on a SHOW!

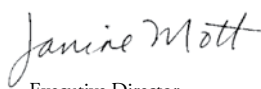
We hope this expanded publication, combining the TCC Gig Harbor Campus class schedule with the Peninsula Recreation Guide, will make it easier for you to take advantage of all that our community offers. Thanks to the collaborative efforts of Tacoma Community College, PenMet Parks and the Peninsula Athletic Association, this compendium provides “one-stop” browsing for this winter’s Gig Harbor experiences. Take some time to explore the possibilities, choose what fits your needs best, and then make your plans to attend. We look forward to seeing you there!



Executive Director
PenMet Parks



Athletic Director
Peninsula Athletic Association



Executive Director,
Gig Harbor Campus
Tacoma Community College



Winter 2012 Tacoma Community College

GIG HARBOR SCHEDULE Volume 13, Number 2

Published quarterly by Tacoma Community College, 6501 South 19th Street, Tacoma, WA 98466. Postage paid at Tacoma, WA. POSTMASTER: Send address changes to Tacoma Community College, Continuing Education, 6501 South 19th Street, Tacoma, WA 98466

Contents

Tacoma Community College

- 2 Registration Form
- 4 Art & Creativity
- 4 Health & Fitness
- 4 Language & Culture
- 5 Recreation
- 5 Special Interest
- 5 Credit Courses

PenMet Parks Recreation Guide

- 6 Mommy & Me Classes
- 6 Preschool Camps
- 7 Youth Camps
- 8 Youth Sports and Activities
- 9 Family Activities
- 9 Adult Sports and Activities
- 10 Special Events
- 11 Registration Form

Need a flexible class schedule?
Look for our six-week to six-month

Online Classes!

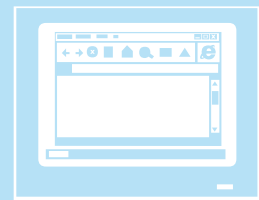
For a complete listing of our online offerings visit:

www.tacomacc.edu/ce

or go to the ed2go and Gatlin websites for more information:

www.ed2go.com

www.gatlineducation.com





Art & Creativity

Take Time for Art!

Class size limited to nine students so register early! This class fills quickly.

By student request: an art course driven by what you need to learn (your choice of medium) ink, oil pastel, color pencil, watercolor, or drawing. Individual instruction provided to help and motivate you. Tools and tips offered to help solve problems and improve techniques. Take time for art with fellow students! This class will allow students to work on individual projects with instruction available for specific needs to help students become the artist they imagine. Get artistically motivated, overcome self doubt. Positive instructional help with the art you want to create. All levels welcome. 6 sessions.

G026 GHART 093 Jan. 3-Feb. 7 Tu
11a-1p GHC Whitacre \$109

NEW! Introduction to Drawing – Intermediate

This class expands on basic drawing concepts, and is designed for both beginners who have taken the beginning class with Carrie Whitacre and those who have had some drawing experience. Learn new skills! You will do basic, linear, and expressive drawing and develop a sketchbook of your work. Required supplies: 11x14 sketchbook, drawing pencil set, kneaded eraser. Other items discussed at the first class. 8 sessions. No class Jan. 16 and Feb. 20.

G041 GHART 097 Jan. 9-Mar. 12 M
7-8:30p GHC Whitacre \$129

Watercolor – Beginning

Sherri Bails will show you how to begin your journey with watercolor. She will discuss the basic parts of a painting, show you how to plan each piece, teach you about color choices and mixing, and help you find your individual style. Pick up supply list at GHC. 8 sessions. No class Jan. 16 and Feb. 20.

G023 GHART 025 Jan. 9-Mar. 12 M
10a-12:30p GHC Bails \$129

Watercolor – Continued

Instructor permission required.

For those who have taken the beginning class with Sherri Bails or who have painted before. Come and build on basic design concepts. Discover sophisticated techniques to invigorate your work with new freedom and expressiveness. Pick up supply list at Gig Harbor Campus. 8 sessions.

G024 GHART 026 Jan. 5-Feb. 23 Th
10a-12:30p GHC Bails \$129

NEW! Introduction to Touch Drawing

Touch Drawing is a simple, expressive art process that awakens a deeper creative source connecting us to our intuition and freeing our inner creative spirit. No prior art experience, no technical methods. Join us! Pick up material list at Gig Harbor Campus. 4 sessions.

G035 GHART 040 Jan. 10-31 Tu
2-5p GHC Sullivan \$99

NEW! Expressive Acrylics

Explores self-expression through drawing and abstract expressive acrylic methods to loosen you up and grow your creative courage. No prior art experience, no technical methods. Join us! Pick up material list at Gig Harbor Campus. 6 sessions.

G038 GHART 041 Jan. 19-Feb. 23 Th
2-5p GHC Sullivan \$129

NEW! Jewelry Design Workshop – Memory Wire Bracelet

Learn to work with memory wire to create a fun and stylish cuff bracelet. The techniques you learn will help you create a variety of jewelry projects. The instructor will provide supplies, however a \$20 supply fee is due the day of the workshop. 1 session.

G009 GHART 094 Jan. 14 Sa
9-11a GHC Fierro \$29

NEW! Jewelry Design Workshop – Beginning Earrings

Learn to make stylish earrings! Learn techniques to help you create a variety of jewelry projects. You will leave class with three unique earring sets and jewelry making tools so you can continue making earrings at home. The instructor will provide supplies, however a \$20 supply fee is due the day of the workshop. 1 session.

G008 GHART 095 Feb. 11 Sa
9-11a GHC Fierro \$29

NEW! Jewelry Design Workshop – Crimping

Learn to make beaded necklaces! Learn techniques to help you create a variety of jewelry projects. Leave class with a completed necklace and your own crimping tool so you can continue making necklaces at home. The instructor will provide supplies, however a \$20 supply fee is due the day of the workshop. 1 session.

G007 GHART 096 Mar. 10 Sa
9-11a GHC Fierro \$29

Wood Carving

Join Jim Olliges, a master woodcarver, and learn the techniques of the folk art of chip carving and woodcarving. Supplies discussed at first class session. For adults of all ages and skill levels. 9 sessions.

G030 GHART 078 Jan. 3-Feb. 28 Tu
1:30-4p GHC Olliges \$139



NEW! Digital Photography Workshop – Let’s Put on a Show!

Equipment needed: digital camera, memory card, fresh batteries, laptop (optional), walking shoes and money for lunch (we’ll eat at a local eatery as we go over our images).

Beat those winter blues – shoot with local photographer Jesse Michener!

We’ll meet from 9-11 a.m. on campus and cover some basics of good composition and technique. Then we’ll hit the streets of Gig Harbor for a fun afternoon of photo-walking with a selected theme. Over lunch, we’ll select and do some basic editing of our shots. Best images will be printed and presented as a photography exhibition on campus at a later date!

G047 GHCOM 012 Mar. 10 Sa 9a-3p
 GHC Michener \$59



Computers

Computers: Getting Started and Progressing On

This course is great if you want to take control of the technology in your life, or if you’re re-entering the job market. Start by gaining knowledge on the basic features of a computer and how they function. The class progresses to discover file management, Microsoft Word, help and support, emailing, internet research and how to protect your computer from viruses. Get the most out of your computer and have fun at the same time. Microsoft book will be provided. 6 sessions.

G050 GHCOM 017 Jan. 17-Feb. 2 Tu/Th 10a-12p GHC Youtsler \$139

NEW! Resumé Writing with Word

Discover the broad range of Microsoft Word features to make your resumé look polished and professional. Learn the basic steps necessary to create, edit, and save a resumé using any version of Microsoft Word. Learn basic editing tools to enhance your resumé and help you get that job! Templates will also be covered. This class is not a resumé writing class, but a class designed to help you format a resumé using Word. 2 sessions.

G059 GHCOM 011 Feb. 14 & 16 Tu/Th 10a-12p GHC Youtsler \$49

Health & Fitness

HIV-AIDS Independent Study for Health Professionals

Must pre-register by calling 253.460.2424.

This seven-hour DVD program prepares you to meet the AIDS education requirements mandated by the State of Washington. Self-instructional DVDs may be checked out for a one-week period; checkout day is Wednesday, to be returned no later than the following Tuesday. Upon return of the DVD’s and a successfully completed exam, a certificate of completion will be issued. Meets licensing requirements for all occupations except EMTs. DVDs must be picked up and dropped off at the Gig Harbor Campus.

G006 GHHEA 010 GHC \$55

Meditation: Go from Chaos to Calm

This class offers the tools and practice skills you need to begin the self nurturing practice of “mindfulness meditation.” Instructor, Ned Bratspis, a licensed marriage and family therapist, has been offering this class in Gig Harbor since 2006. Learn mind/body/healing basics that you can start using right away! 1 session.

G032 GHHEA 024 Feb. 27 M 6:30-8:30p GHC Bratspis \$39

Yoga for Fitness

You’ll love this yoga fitness class to keep you toned! It is a full-body, non-impact workout blending yoga, pilates and tai chi movements choreographed to music. It’s amazing how this mind-body connection improves flexibility, balance, core strength and fitness level incorporating smooth transitions and changing movements. Bring yoga mat and wear comfortable clothes. Co-ed and suitable for all fitness levels. 7 sessions. No class Jan. 16 and Feb. 20.

G015 GHREC 075 Jan. 4-Feb. 15 W 12:15-1:15p HDPC Brower \$99

G016 GHREC 075 Jan. 7-Feb. 18 Sa 9-10a HDPC Brower \$99

G017 GHREC 075 Jan. 9-Mar. 5 M 10:45-11:45a HDPC Brower \$99



Language & Culture

Basic Spanish

Learn basic Spanish grammar and simple phrases that will enable you to cope with common situations when traveling, or when dealing with Spanish speakers. Some conversation and cultural insights are included. Textbook included. 5 sessions.

G003 GHLAN 035 Jan. 11-Feb. 8 W
7-9p GHC Adams \$115

Performing Arts

NEW! Introduction to Songwriting and Composition

Create music that embodies feeling without forcing it. Learn to get in touch with your own personal muse and philosophy of creativity within the structure and mechanics of song crafting. 6 sessions.

G061 GHPER 091 Jan. 11-Feb. 15 W
4:30-6p GHC Roberts \$89

An Introduction to Voice-Overs – Getting Started in Voice Acting

This introductory workshop covers the different types of voice-overs and what tools are needed to find success. You'll be coached and recorded as you read a script so you can receive a professional voice-over evaluation later. Gain the knowledge to help you decide if this is something you'd like to pursue. Taught by a professional voice actor from the voice acting training company. 1 session.

G040 GHPER 010 Jan. 26 Th
6-9p GHC Voices For All \$49

Special Interest

NEW! Beginning Memoir Writing

Do you want to tell your story? Have you always wanted to write your memoir but didn't know where to begin? Learn about basic writing skills, the memoir genre, and publishing. Taught by published memoirist, Elizabeth Corcoran Murray. 3 sessions.

G020 GHSPI 093 Jan. 27-Feb. 10 F
10a-12p GHC Murray \$59

NEW! ICD-9 to ICD-10, Making the Change: Coder's Prep Test Study Group

An overview of the new ICD-10 for medical diagnosis and an opportunity to practice translating ICD-9 to ICD-10. Come join this intensive hands-on workshop with an opportunity to work with other coders in small groups to practice test question scenarios. This session is beneficial for current coding and billing students as well as those who are already working in a medical office. Facilitated by Marvel Grey CPC, CCS-P, MCS-P, CHCA, PCS, CCP, CCO, CMPM. 1 session.

G042 GHMED 001 Feb. 11 Sa
9a-1p GHC Gray \$50



Piano 101

Group Piano Lessons

With other beginners at your side, fulfill your dream to read music and play the piano. This nine-week course will take you through the basics of rhythm, pitch reading, and elementary fingering at the keyboard. No experience necessary, but student must have access to a piano or keyboard for home practice. Maximum class size is four so register early! 9 sessions.

G012 GHPER 012 Jan. 5-Mar. 1 Th 9:30-10:30a
CLPS Liljengren \$219

Need a flexible class schedule?
Look for our six-week to six-month

Online Classes!

For a complete listing of our online offerings visit:

www.tacomacc.edu/ce

or go to the ed2go and Gatlin websites for more information:

www.ed2go.com

www.gatlineducation.com.



TCC Gig Harbor Campus Winter Credit Courses

Anthropology

ANTH& 206 Cultural Anthropology

Art

ART 102 Two-Dimensional Design

Biology

BIOL&175 Human Biology w/Lab

Business

BUS 102 Customer Service

BUS 110 Business Math

BUS 164 Leadership and Human Relations

Communication Studies

CMST& 101 Intro. to Communication

CMST 110 Multicultural Communication

Computer User

CU 105 Word I, Excel I

English

ENGL 276 Creative Writing - Fiction

ENGL 277 Creative Writing - Fiction

ENGL& 101 English Composition I

ENGL& 102 Composition II: Argument and Persuasion

English (Academic General Education)

ENGL/ 095 Academic Reading and Writing II: Threshold

Fresh Start

FRSH 098 English - Fresh Start

FRSH 100 Pathways to College Success

Health Information Management

HIM 130 Medical Terminology I

HIM 131 Medical Terminology II

History

HIST& 126 World Civilizations I

HIST& 147 US History II

Human Development

HD 101 Student Success Seminar

Mathematics

MATH 075 Review Arithmetic

MATH 085 Intro. to Elementary Algebra

MATH 090 Elementary Algebra

MATH 095 Intermediate Algebra

Medical Office

MO 100 Med. Office Procedures

MO 106 Professional Document Production

MO 140 Medical Transcription I

MO 143 Med. Office Professional Development

MO 148 Medical Reimbursement II

MO 241 Clinical Applications for Medical Office

MO 299 Individual Study in Med. Office Transcription

Nutrition

NUTR& 101 Human Nutrition

Physical Education

PE 170 Independent Fitness Lab I

Psychology

PSYC& 100 General Psychology

PSYC 240 Social Psychology

Sociology

SOC& 101 Introduction to Sociology

Get your GED and improve job skills

Gig Harbor and Key Peninsula residents are able to complete a basic skills education for college entrance, employment skills, or a GED. Classes available:

Tues | Wed | Thurs
9:30-11:30 a.m. at the
Home fire station
on the Key Peninsula

Mon | Tues | Wed
6-8 p.m. at the
TCC Gig Harbor Campus

For detailed class information, registration and orientation call Tracy Clark at 253.460.2356.

You can check up-to-the-minute class availability (and get a full listing of times, days and locations offered) in our online class schedule at www.tacomacc.edu/classschedule.



PenMet Park Class Locations:

Sehmel Homestead Park
10123 78th Ave NW, Gig Harbor
(78th Ave NW & Sehmel Dr. NW)

Boys & Girls Club
8502 Skansie Avenue, Gig Harbor



Fitness & Wellness Challenge 2012

PenMet Parks encourages you to focus on being healthy for life. Take a small step with one of the PenMet Fit Challenges. **Jan. 2**

Look for more information at

www.penmetparks.org.

Family Activities

Breakfast with Santa

Join us for the 2nd Annual PenMet Parks and Peninsula Athletic Association Breakfast with Santa. Celebrate the holiday season with a 3x5 professional photo with Santa, music, entertainment, holiday crafts and a pancake breakfast provided by the Gig Harbor Kiwanis. Child must be accompanied by a paid adult.

Boys & Girls Club	Fee \$8/person
ID# 515 12/3	9:00a-11:00a Sa

Ski & Snowboard Lessons

Ages: 4 & up

Have you wanted to learn how to ski or snowboard or improve your skills? PenMet Parks and Alpine West Ski and Snowboard School are offering quality lessons and transportation on a weekly basis. Alpine West Ski and Snowboard School has offered family-oriented lessons for the past 30 years. Located at Snoqualmie Pass the chalet is located at Summit central. There will be advanced and beginner classes so everyone can have fun together. Class sizes are anywhere from 3-9 students. NOTE: Price does not include lift tickets or equipment rentals. Visit www.alpinewestskischool.com for more information.

Alpine West Ski School	Fee \$150
ID# 556 1/7 to 2/11	10:30a-12:30p Sa
ID# 548 1/8 to 2/12	10:30a-12:30p Su

Ski & Snowboard Lessons with Transportation

Ages 4 to 9 with adult supervision.
Ages 10 & older to ride bus.

Bus leaves at 7:30 a.m. from Safeway parking lot on 6th Ave., Tacoma and returns at approximately 6 p.m.

Alpine West Ski School	Fee \$258
ID# 549 1/7 to 2/11	10:30a-12:30p Sa
ID# 550 1/8 to 2/12	10:30a-12:30p Su

Mini-Session Ski & Snowboard Lessons

Want to learn how to ski or snowboard but having trouble fitting six weeks of lessons into a busy schedule? A wide range of classes for the whole family are available to meet all ability levels.

Alpine West Ski School	Fee \$90
ID# 551 1/7 to 1/21	10:30a-12:30p Sa
ID# 552 1/8 to 1/22	10:30a-12:30p Su

Mini-Session Ski & Snowboard Lessons with Transportation

Ages 4 to 9 with adult supervision.
Ages 10 and older to ride bus.

Bus leaves at 7:30 a.m. from Safeway parking lot on 6th Ave., Tacoma and returns at approximately 6 p.m.

Alpine West Ski School	Fee \$166
ID# 553 1/7 to 1/21	10:30a-12:30p Sa
ID# 554 1/8 to 1/22	10:30a-12:30p Su

Friday Nite Escape - Ski & Snowboard Lessons

Friday Nite escape from your busy week. A wide range of classes for the whole family are available to meet all ability levels.

Alpine West Ski School	Fee \$125
ID# 555 1/6 to 2/3	5:30p-7:00p F





Youth Sports & Activities

Young Performing Arts

Ages: 4 to 7

Give your 4- to 7-year-old an introduction to the world of musical theater. We will dance, we will act, we will sing, we will have fun! The class is designed for these young performers using methods from creative dance and creative dramatics to develop imagination and confidence. No class on 1/16 & 2/20.

Sehmel Homestead Park Fee \$85
ID# 541 1/9 to 3/26 4:15p-5:15p M

Theater Performance Workshop

Ages: 7 to 15

Join Kathleen McGillard for a fun, creative theater performance workshop. Workshop is designed to develop the skills necessary to produce a play specially chosen for this group of young performers, incorporating acting, voice and movement training. All participants will have a speaking role in the play. Show off your skill in a performance for family and friends. No class 2/21 & 2/23.

Sehmel Homestead Park Fee \$200
ID# 540 1/10 to 3/22 4:15p-6:15p TuTh

Acting for Youth

Ages: 8 to 14

Join others and develop acting skills through scene work, monologues and improvisation. This fun, interactive class will get you started or refine your acting skills. No class 2/22.

Sehmel Homestead Park Fee \$85
ID# 523 1/11 to 3/21 5:15p-6:15p W

Adult Sports & Activities

Acting for Adults

Ages: 18 & up

Join others and develop acting skills through scene work, monologues and improvisation. This fun, interactive class will get you started or refine your acting skills. No class 2/25.

Sehmel Homestead Park Fee \$85
ID# 527 1/14 to 3/24 9:00a-10:00a Sa

Musical Theater

Ages: 10 to 14

If you want to be a strong triple threat performer, this is the class for you. Come join us as we sing our hearts out, dance our socks off and act our way through some fun musical theater songs and shows chosen for students aged 10-14. No class 2/22.

Sehmel Homestead Park Fee \$85
ID# 524 1/11 to 3/21 4:15p-5:15p W

Guitar - Group Lessons

Ages: 10 to 14

Learn how to play the guitar in a FUN group setting. You will learn basic techniques: how to hold, tune and strum the guitar. Learn the basic three chords for anthems like *Louie*, *Louie* and *Smoke on the Water*. Great entry level for new students. No class 2/23.

Boys & Girls Club Fee \$85
ID# 543 1/19 to 3/1 5:00p-5:40p Th
ID# 544 3/8 to 4/12 5:00p-5:40p Th

Guitar - Beyond the Basics

Ages: 10 to 14

Continue to improve your skills. A great level for students who have taken Guitar I or have previous experience. Expand your skills: tuning, picking, strumming, chord progressions and rhythm techniques. Bring your acoustic or electric guitar. No class 2/23.

Boys & Girls Club Fee \$85
ID# 545 1/19 to 3/1 6:00p-6:40p Th
ID# 546 3/8 to 4/12 6:00p-6:40p Th

Reader's Theater

Ages: 18 & up

Love to be dramatic but hate learning lines? We have just the thing for you. Reader's Theater is acting while reading directly from scripts. Without the need for props or costumes, the seated performers tell a story using intonation and gestures appropriate for their character. An entertaining non-physical way to perform. No class 2/25.

Sehmel Homestead Park Fee \$85
ID# 542 1/14 to 3/24 10:00a-11:00a Sa

Audition

May 18-19-20

for our summer
MainStage Production

The Sound of Music

is currently
under consideration

Adults as well
as Children

Email artsadvocate@centurytel.net after
May 5, 2012 for an
appointment to audition.

Casting prerequisite for
children: Participation
in at least one PenMet
Workshop or approval
of the Director.



Join Us For Breakfast With Santa

December 3, 2011
9:00 AM - 11:00 AM
Boys and Girls Club Gig Harbor
8502 Skansic Ave. • Gig Harbor

Holiday Music • Holiday Crafts
Santa Photos • Pancake Breakfast – *Gig Harbor Kiwanis*

\$8.00
per person

Produced in partnership by



To register or for more information:
www.PenMetParks.org, or call (253) 858-3400
paayouth.org, or call (253) 858-7678

Sehmel Homestead Park

Pavilion (below, seats 96)
Amphitheater (seats 1000)
Meadow (2 acres)
Turf Soccer Field
Ball fields

Hales Pass (Arletta)

20x30 Room
Large Picnic Shelter
Ball Field
Rosedale
Picnic Shelter
Ball Field

Rentable Facilities
www.PenMetParks.org
253-858-3400 x222





PenMet Parks - Registration Form

ONLINE:	PHONE IN:	MAIL IN:	WALK IN:	FAX IN:
PenMetParks.org	<u>Using Credit Card only</u> Please have all information ready before calling (253) 858-3400	Send form and payment to: PenMet Parks P.O. Box 425 Gig Harbor, WA 98335	3622 Grandview St Gig Harbor, WA 98335 Mon-Friday 8:00am-4:00pm	Fax form with Credit card information: (253) 858-3401

Participant's Name	Birth Date	Age	Sex	Class/Activity Description	Fee
TOTAL					

Adult's Last Name _____ First Name _____ Date _____

Address _____ City _____ State _____ Zip _____

Home Phone _____ Day Phone _____ Cell Phone _____ E-mail _____

School & Grade child is attending _____ T-Shirt Size _____ (sport leagues only)

Check # _____ Payable to PenMet Parks

Card # _____ / _____ / _____ Expiration Date _____ V Code _____

Authorized Signature _____

RELEASE OF LIABILITY: I (we) understand there are special dangers and risks inherent in this activity, including but not limited to, the risk of serious physical injury, death or other harmful consequence which may arise directly or indirectly from the my or my child(ren)'s participation in this activity. Recognizing these risks and in consideration of the district's allowing me or my child(ren) to participate in this sponsored activity and/or use of district facilities I (we), on behalf of myself (ourselves) and/or on behalf of the above-named participant child(ren), assume all risk of injury, damage and harm to me or the child(ren) which may arise from participation in activities or use of district facilities. I (we) further agree, individually and/or on behalf of the above-named child(ren), to release and hold harmless PenMet Parks, its officials, employees, contractors, and associated agents (hereinafter collectively "Peninsula Recreation Program"), and agree to waive any right of recovery that I (we) may have to bring a claim or lawsuit for damages against them for any personal injury, death or other harmful consequences occurring to the above-named child or me arising out of the my or the child(ren)'s voluntary participation in this activity. I (we) grant my (our) full and voluntary consent for the above-named child(ren) to participate in the activity described above, and authorize the Peninsula Recreation Program and its employees or agents to provide emergency treatment for me, or my child(ren) on my behalf. I give my permission to have my photo or the photo of my child(ren) taken during classes used for publicity purposes by the Peninsula Recreation Program. I consent to the use of my name, likeness and voice or those of my child(ren) without monetary compensation in connection with any Peninsula Recreation Program publicity, and expressly release the Peninsula Recreation Program and its agents from any and all claims for damages for libel, slander, invasion of the right of privacy and any other claim arising out of any broadcast, exhibition, promotion or advertising of the Peninsula Recreation Program.

Registration/Refund Policy:

- Payment is due at time of registration.
- Class canceled by PenMet will be refunded in full.
- Classes canceled by patron require one week cancellation notice and a \$10 administrative fee will be charged.
- To avoid the \$10 fee, customers may credit their accounts. Credits can be used within 1 year.
- No refunds will be issued once an activity has began.



POSTAL CUSTOMER

Winter 2012

TCC Gig Harbor Campus Class Schedule
PenMet Parks Recreation Guide



- Gig Harbor's official guide to
- EVENTS
 - CREDIT CLASSES
 - CONTINUING EDUCATION
 - RECREATION
 - CHILDREN'S ACTIVITIES
 - and more!



Get going! Classes start soon